

Blackwire 5200 Series

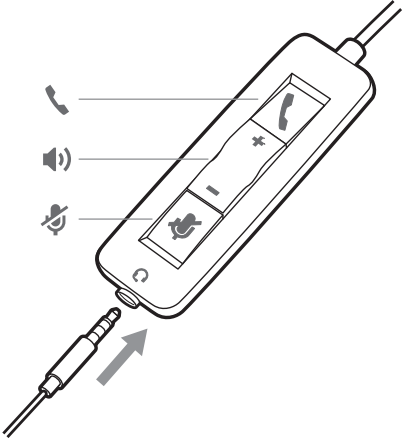
Corded USB Headset with 3.5 mm Connection



User Guide

Contents

Overview	3
Setup	4
Load software	4
Fit	5
Adjust the headband	5
Position the boom	5
Adjust the boom	5
Basics	6
Make/take/end calls	6
Volume	6
Mute	6
Troubleshooting	7
Headset	7
Support	8

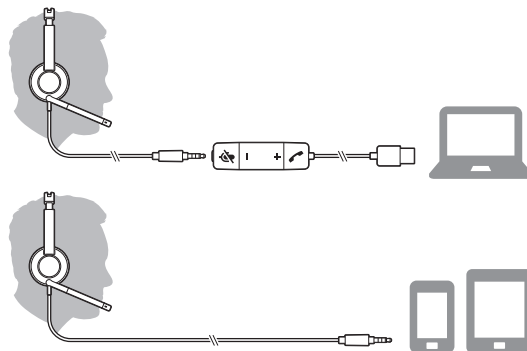
Overview



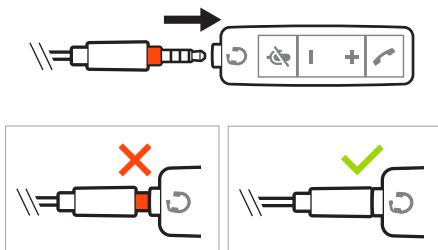
Icons	Inline control	LEDs	Function
	Call button	Triple flash green	Incoming call
		Double flash green	Call on hold
		Solid green	On a call
+	Volume up button		Increases the listening volume
-	Volume down button		Decreases the listening volume
	Mute button	Solid red	Headset is muted

Setup

Power on your headset by connecting to your computer or mobile device via USB or 3.5 mm connector.



IMPORTANT Ensure that your 3.5 mm connector is fully connected to the headset controller.



Load software

IMPORTANT Some softphones require the installation of Plantronics Hub for Windows/Mac to enable headset call control (answer/end and mute) functionality.

Download Plantronics Hub for Windows/Mac by visiting plantronics.com/software.

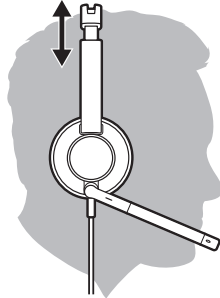
Manage your headset settings on your computer with Plantronics Hub:

- Call control for softphones
- Change headset language
- Update firmware
- Turn features on/off
- View user guide

Fit

Adjust the headband

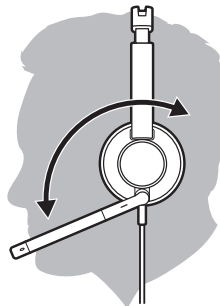
Lengthen or shorten the band until it fits comfortably. The cushions should sit comfortably over the center of your ears.



Position the boom

The headset can be worn with the boom on your left or right side. For true stereo listening, wear the boom on your left side.

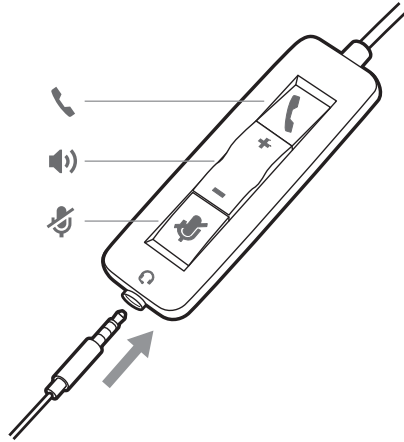
Rotate the boom to align with your mouth.



Adjust the boom

Gently bend the boom in or out so it is approximately one finger width from the corner of your mouth.

Basics



Make/take/end calls

Headset call control is a software feature and dependent on a compatible softphone. If you have not installed Plantronics Hub or do not have a compatible softphone, press the headset call button first and then make/take/end the call using the softphone application. Download Plantronics Hub for Windows or Mac at plantronics.com/software.

NOTE *Inline feature support is not available when the headset is connected via the 3.5 mm jack.*

Answer or end a call

Tap the Call button or use your softphone.

Make a call

Dial using your softphone application.

Redial

When not on an active call, double-tap the call button to redial the last call.

Hold

Double-tap the Call button to put a call on hold.

Volume

Listening volume

Press the Volume up (+) or Volume down (-) button.

Adjust headset microphone volume (softphone)

Place a test softphone call and adjust softphone volume and PC sound volume accordingly.

Mute

During a call, press the mute button. When mute is on, the LED is solid red. Modify your mute settings in Plantronics Hub for Windows or Mac.

Troubleshooting

Headset

I hear a high-pitched noise when wearing the headset.	<ul style="list-style-type: none">• Ensure that your 3.5 mm connector is fully connected to the headset controller.
---	---

I cannot hear caller.	<ul style="list-style-type: none">• Listening volume is too low. Press the volume up button on the headset, and/or ensure that the volume setting on your computer is set accurately.• Your headset is not set as the default audio device. Use the audio settings in your sound control panel/preferences to select your headset as the default audio device.• Ensure that your 3.5 mm connector is fully connected to the headset controller.
-----------------------	---

Callers cannot hear me.	<ul style="list-style-type: none">• Headset is muted. Tap the mute button to unmute the microphone.• Headset microphone boom aligned incorrectly. Align the headset boom with your mouth.• Your headset is not set as the default Voice device. Use the audio settings in your sound control panel/preferences to change the input device.• Ensure that your 3.5 mm connector is fully connected to the headset controller.
-------------------------	--

The sound in the headset is distorted.	<ul style="list-style-type: none">• Lower the listen volume on your softphone until the distortion disappears.
I can hear an echo in the headset.	<ul style="list-style-type: none">• Adjust volume on headset.• Ensure that your 3.5 mm connector is fully connected to the headset controller.

When I use my headset with a softphone, the headset call control and mute buttons don't work.	<ul style="list-style-type: none">• Make sure the softphone you are using is supported by viewing www.plantronics.com/softphonecompatibility.• If required to enable headset control (answer/end and mute) functionality, ensure you have Plantronics Hub for Windows/Mac installed. See Load software.• Your mobile device may not support call control functionality. Check with device manufacturer.
---	---

The other headset I was using to listen to music does not work any more.	<ul style="list-style-type: none">• Your headset will set itself as the default audio device in Windows. Use the audio settings in your sound control panel/preferences to change the audio device.
--	---

My phone is not finding my headset during a call or while listening to music.	<ul style="list-style-type: none">• When on a call or listening to music, make sure that audio is routing to the desired headset by going to your settings and ensuring it is defaulted.
---	--

Support

NEED MORE HELP?

plantronics.com/support

Plantronics, Inc.

345 Encinal Street
Santa Cruz, CA 95060
United States

Plantronics B.V.

Scorpius 171
2132 LR Hoofddorp
Netherlands

© 2017 Plantronics, Inc. Blackwire and Plantronics are trademarks of Plantronics, Inc. registered in the US and other countries, and Plantronics Hub is a trademark of Plantronics, Inc. All other trademarks are the property of their respective owners.

Patents: US 8,504,115; patents pending.

209253-06 (09.17)