

# JABRA PRO 9400 SERIES

THE POWER OF CONVERSATION

**Our Jabra PRO 9400 Series is perfect for advisors, consultants, emergency services, lawyers, private bankers, real estate agents and traders.**

This premium wireless headset offers triple connectivity, ensuring important customer calls are never missed - even when researching away from the desk.

## SAY HELLO TO OUR WIRELESS HEADSETS

A premium wireless headset with connectivity to up to three phones simultaneously to increase employee productivity.

### FEATURES AT A GLANCE

- World-class sound - Crystal clear conversation even in noisy, open-plan offices
- Maximum wireless freedom - Walk and talk up to 150m/490ft away from the phone
- Multi-device connectivity, flexibility and mobility - Manage all your calls from one headset for your desk phone, softphone, smartphone and tablet



#### Works:



AT OFFICE DESK, AROUND THE OFFICE

#### Works with:



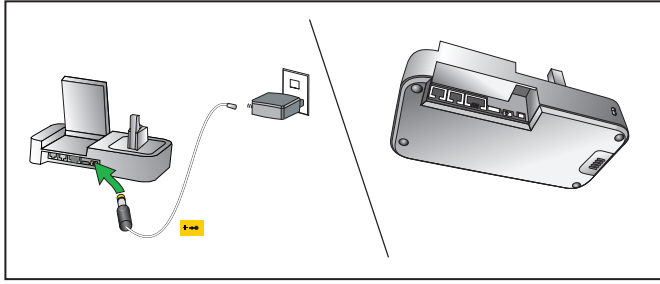
DESK PHONE, SOFTPHONE, SMARTPHONE AND TABLET



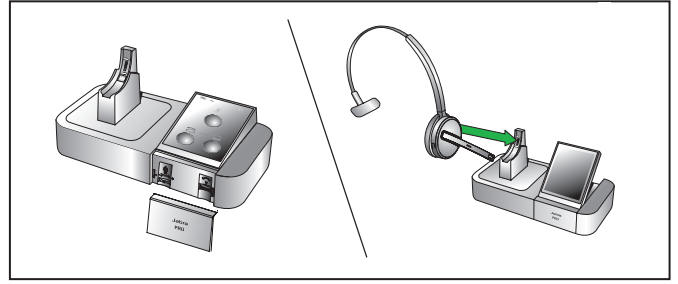
Discover more at [jabra.com/pro9400](http://jabra.com/pro9400)

# JABRA PRO 9400 SERIES QUICK START GUIDE

## 1. Connection

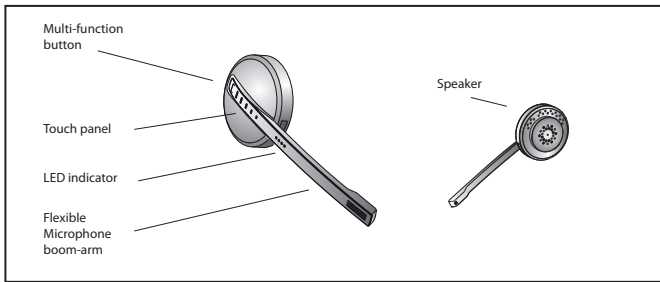


Connect stand with AC adaptor provided. Headset charges when connected properly.

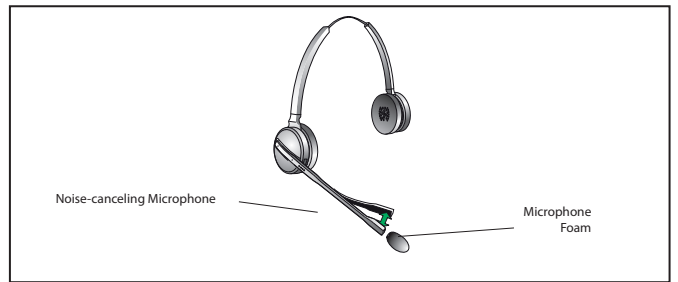


User-friendly touch screen on Jabra PRO 9470, 9465 and 9460 models and touch pad on Jabra PRO 9450.

## 2. Usage



Jabra PRO 9465, 9460 and 9450 flex models feature flexible boom arms for microphone adjustment. The Jabra PRO 9470 has Mono variant available.



Ultra noise-canceling microphone for crystal clear conversations and touch panel to control calls directly from the headset.

## DECISION TIME: FEATURE OVERVIEW



Jabra Pro 9470



Jabra Pro 9465



Jabra Pro 9460



Jabra Pro 9450

<b>Work Space</b>	At office desk	.	.	.	.
	Around office	.	.	.	.
<b>Connectivity</b>	Desk phone	.	.	.	.
	Softphone	.	.	.	.
	Mobile	.	.	.	.
	Tablet	.	.	.	.
<b>Wireless Technology</b>	DECT	.	.	.	.
	Bluetooth	.	.	.	.
<b>Touch</b>	Touchscreen	.	.	.	.
	Touchpad	.	.	.	.
<b>Build</b>	Flexible Boom Arm	.	.	.	.
	Mono	.	.	.	.
	Duo	.	.	.	.
<b>Wearing Style</b>	Headband	.	.	.	.
	Earhook (Mono only)	.	.	.	.
	Neckband (Mono only)	.	.	.*	.*
<b>Cable</b>	Wireless	.	.	.	.

\*Available as an accessory

Jabra is a registered trademark of GN Netcom  
[www.jabra.com](http://www.jabra.com) Bluetooth®

Discover more at [jabra.com/pro9400](http://jabra.com/pro9400)

GN Netcom is a world leader in innovative headset solutions. GN Netcom develops, manufactures and markets its products under the Jabra brand name.